

Technical Manual

Beta ES250



ACOUSTIC & ELECTRICAL SPECIFICATIONS:

- Nominal Impedance 8Ω
- Max Amp Power 150 watts*
- Frequency Response 60Hz – 20kHz (±3dB)
50Hz – 40kHz (–6dB)
- Sensitivity 87dB (2.83V @ 1 meter)
- Crossover Frequency 2.3kHz; 12dB/Octave

SYSTEM COMPONENTS:

- Cabinet Beta ES250 (Not for Sale)
- Side Grille Black (for BLK) 352246-003
Side Grille Gray (for WHT) 352246-004
- Low-Frequency Transducer Dual 5" (130mm) CMMD™ 352097-001
DC Resistance 10.3 ohms ±10%
- High-Frequency Transducer Dual 1" (25mm) CMMD™ 351572-001
DC Resistance 3.5 ohms ±10%
- Crossover Network (for BLK) 351699-001
Crossover Network (for WHT) 351699-002

AURAL SWEEP TEST SPECIFICATIONS:

- System Aural Sweep Test 6.0V Input 50Hz to 20kHz
- L.F. Aural Sweep Test 5.0V Input 50Hz to 3kHz
- H.F. Aural Sweep Test 2.83V Input 2kHz to 20kHz

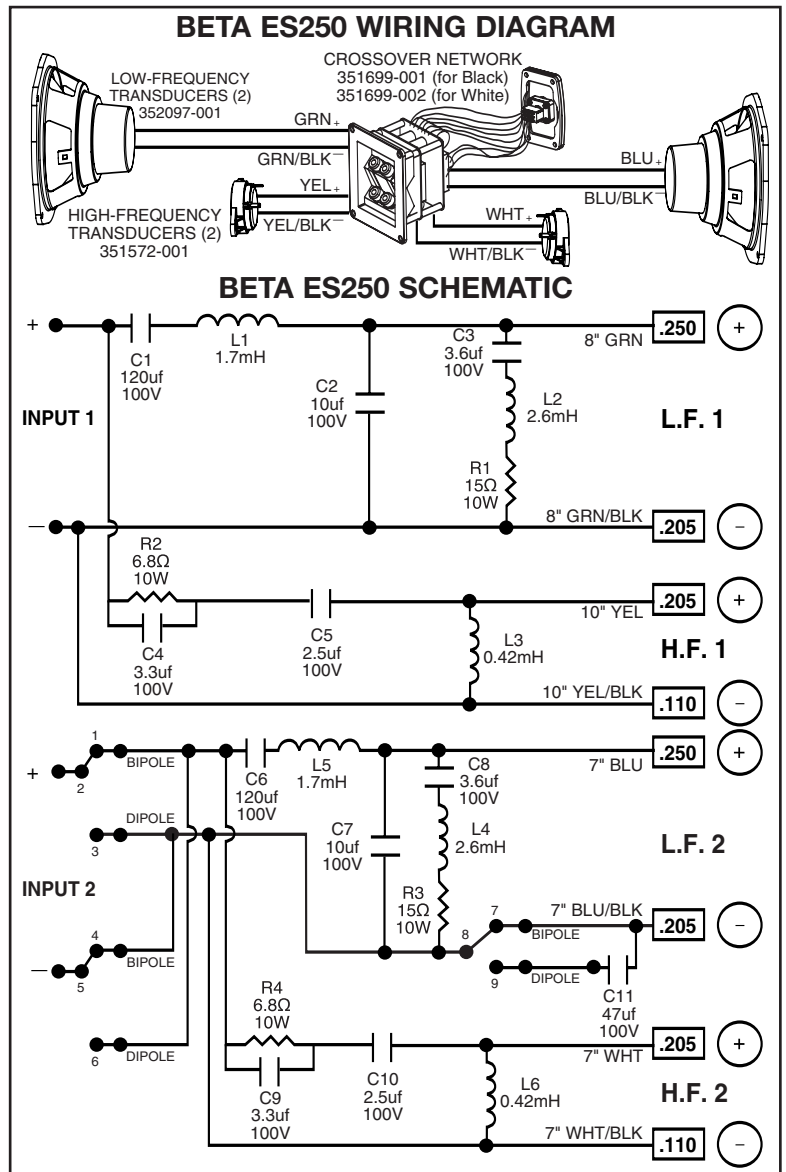
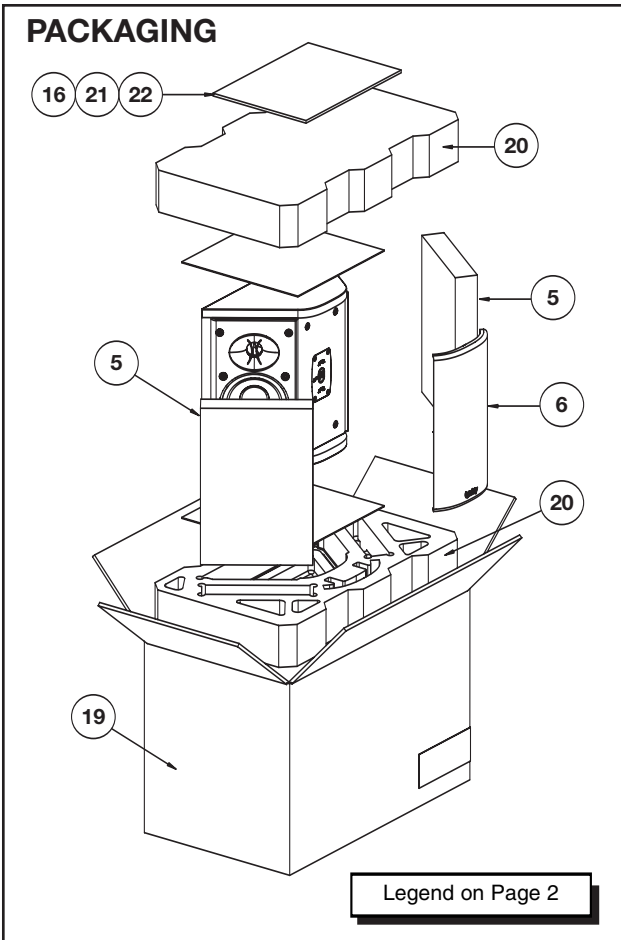
PHYSICAL SPECIFICATIONS:

- Dimensions 13-3/4" x 11-13/16" x 6-7/8"
(H x W x D)
(350mm x 300mm x 175mm)
- Weight 12.5 lb (5.7kg) Each

WARRANTY:

- Refer to Warranty Statement packed with each product.

* The maximum recommended amplifier power rating will ensure proper system headroom to allow for occasional peaks. We do not recommend sustained operation at these maximum power levels.

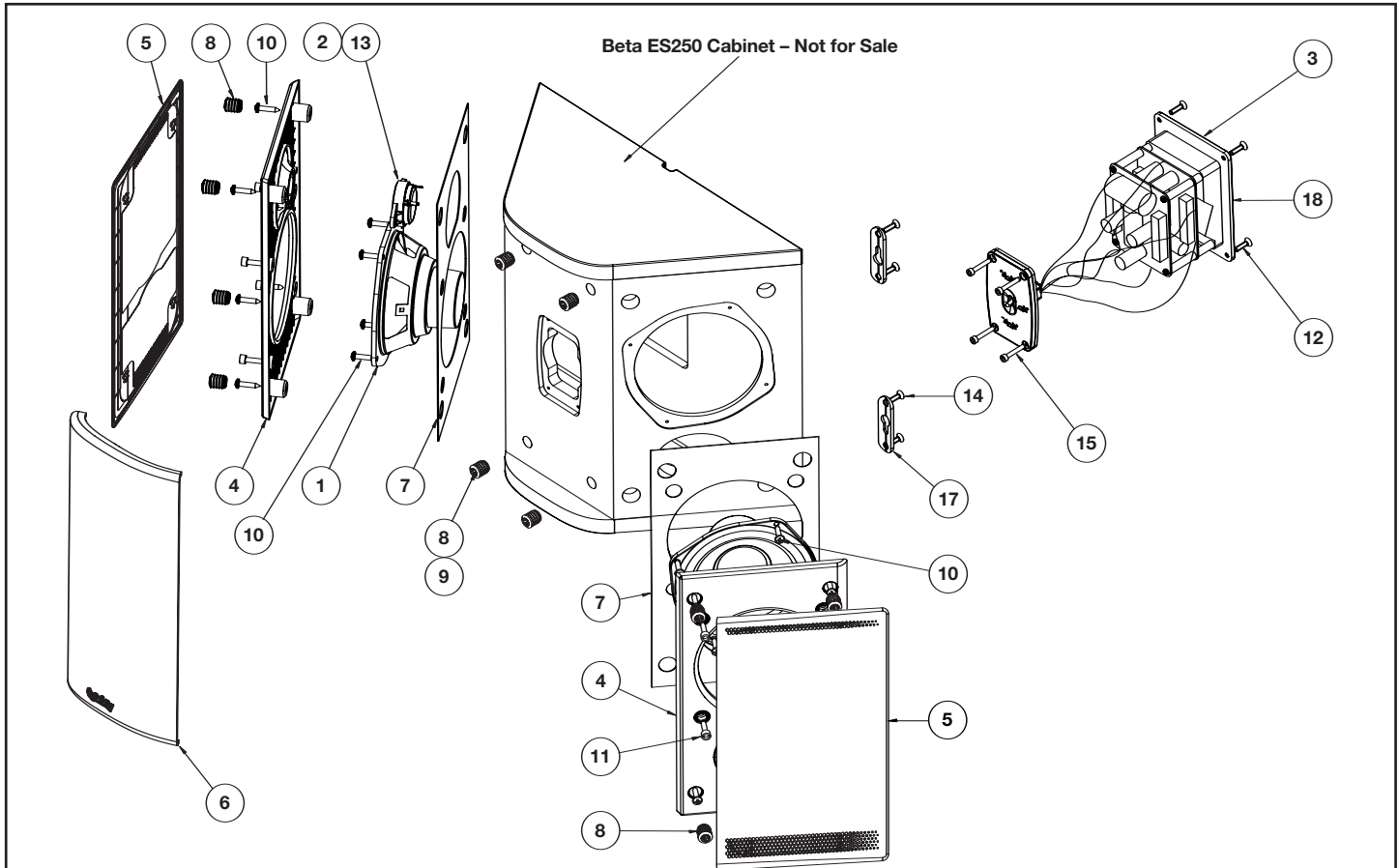


Beta ES250

Technical Manual

Beta ES250

EXPLODED VIEW



ITEM NO.	DESCRIPTION	QTY.	PART NO.	ITEM NO.	DESCRIPTION	QTY.	PART NO.
1.	Woofer	2	352097-001	11.	Screw (faceplate) PB, HXS, #8 x 1" BLK	8	903802-016
2.	Tweeter	2	351572-001	12.	Screw (network) PB, OPH, #6 x .75"	4	903201-012
3.	Crossover Network (for Black) same as above for White	1	351699-001 351699-002	13.	Screw (tweeter mounting) MS, PPH, H/L, 6-19 x .375"	4	905401-006
4.	Faceplate (for Black) same as above for White	2	352442-001 352442-002	14.	Screw (wall brackets) FLT, PH, PB, #8 x .75" BLK ZC	8	59460
5.	Assembly, Grille, Black (for Black) Assembly, Grille, Gray (for White)	2	352246-003 352246-004	15.	Screw (switch faceplate) PB, HXS, #6 x .75" BLK	4	908301-012
6.	Front Bezel, Black (for Black) (switch faceplate cover) same as above in Gray for White	1	352441-001 352441-002	16.	Felt Foot w/Adhesive Backing	4	335634-001
7.	Gasket, Faceplate	2	352254-001	17.	Rear Wall Bracket	4	7071490-001
8.	Cup, Grille and Bezel, Titanium (for Black) Cup, Grille, Titanium (for White)	12	333249-003 333249-003	18.	Shorting Straps (Right/Left Pair)	1 Set	CS06-6
9.	Cup, Bezel, White (for White)	4	333249-005	19.	Carton, Beta ES250 (Black) Carton, Beta ES250 (White)	1	352286-001 352286-002
10.	Screw (faceplate, woofer) PAN, PH, PB, BLK ZINC, #8 x .75"	16	883-41110-12	20.	Pad, Top & Bottom	2	352477-001
				21.	Owner's Manual	1	352611-001
				22.	5-Year Warranty Card, Infinity	1	335841-003

TO SERVICE THE BETA ES250

Remove the grille(s).

1. Tweeter/Woofer: Remove the (4) rubber grille retainers on each wfr/twt faceplate; this can be accomplished by carefully pulling them out of their cavities with long-nosed pliers or similar tool.
2. Remove the (4) Phillips screws that are now exposed.
3. Remove the (4) Hex screws (5/32 or 4mm) bordering the woofer.
4. Carefully separate the front faceplate, with tweeter attached, from the cabinet.
5. Woofer: Remove the (4) Phillips screws that are now exposed.

Beta ES250